



Webinar

Making Sense of the SharePoint Hybrid Hype with Microsoft's Bill Baer

March 31, 2015

Barry Jinks



Speakers



Bill Baer
SharePoint Senior Product Manager
Microsoft

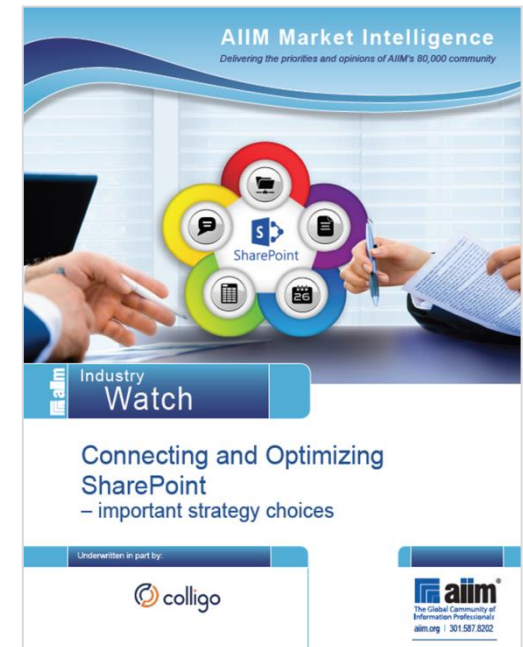
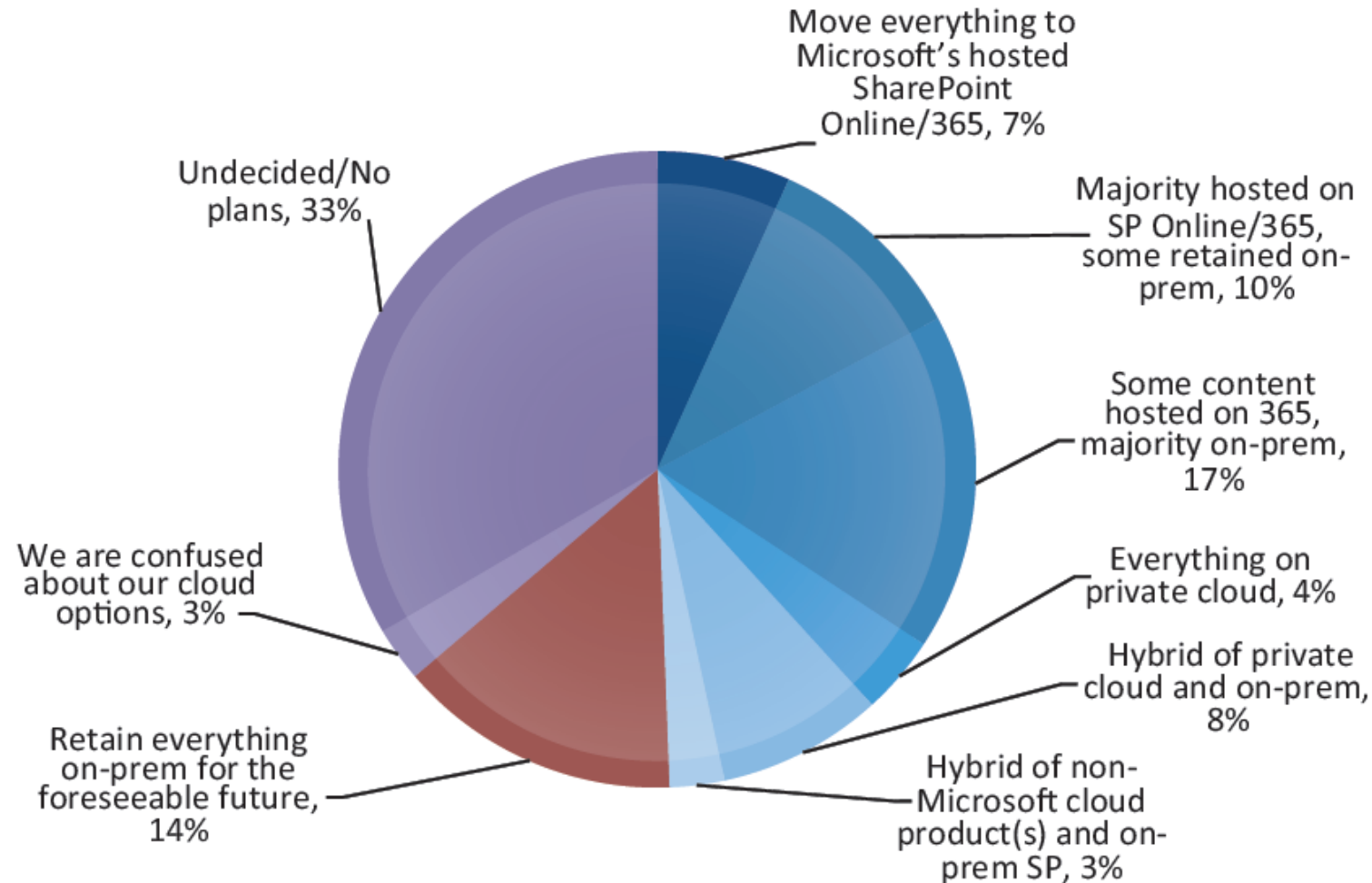


Ben Henderson
Product Manager
Colligo



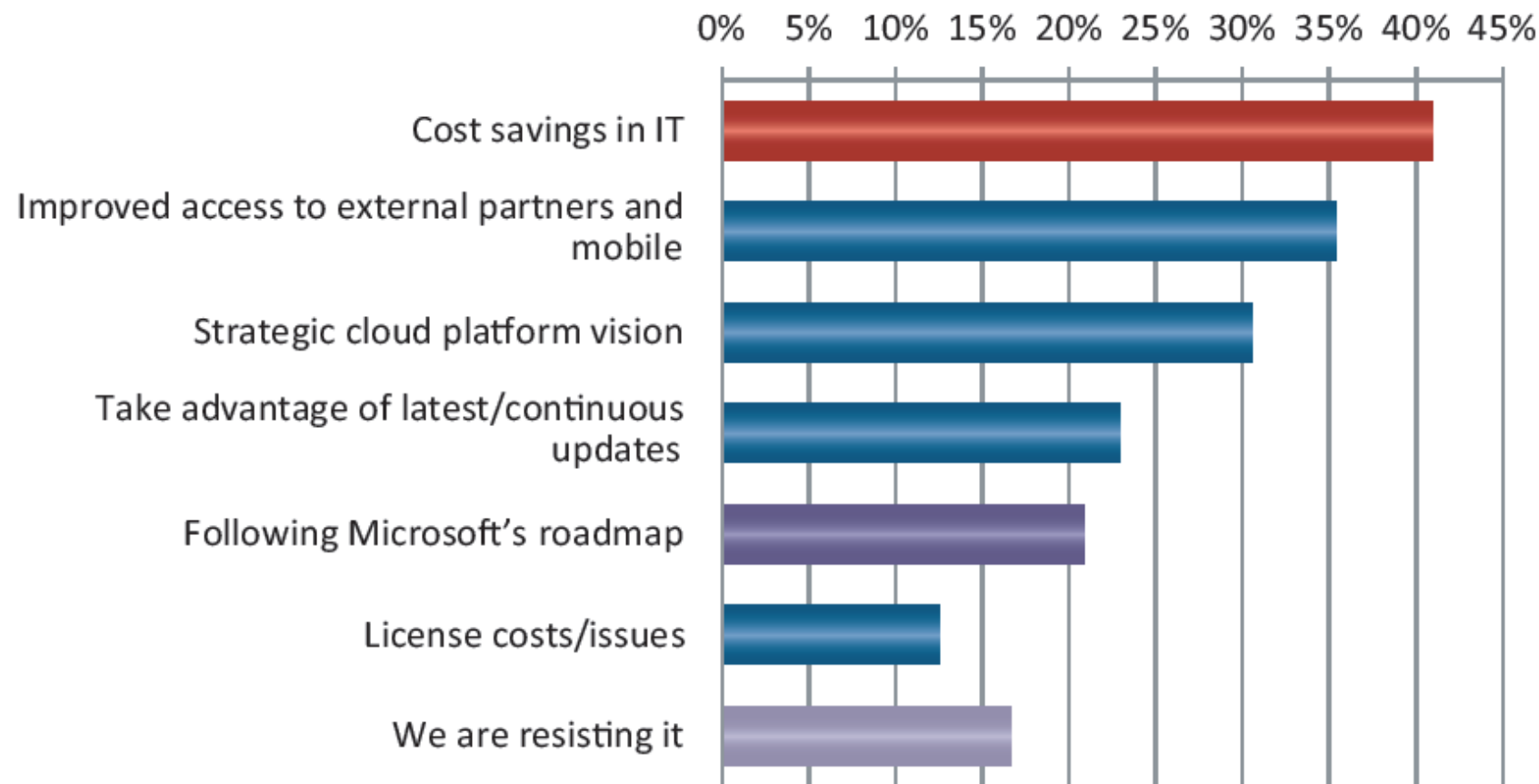
AIIM – 34% SharePoint Online / 365 Plans

Figure 13: What are your plans for SharePoint in the cloud? (N=251, excl. 33 Don't Know)



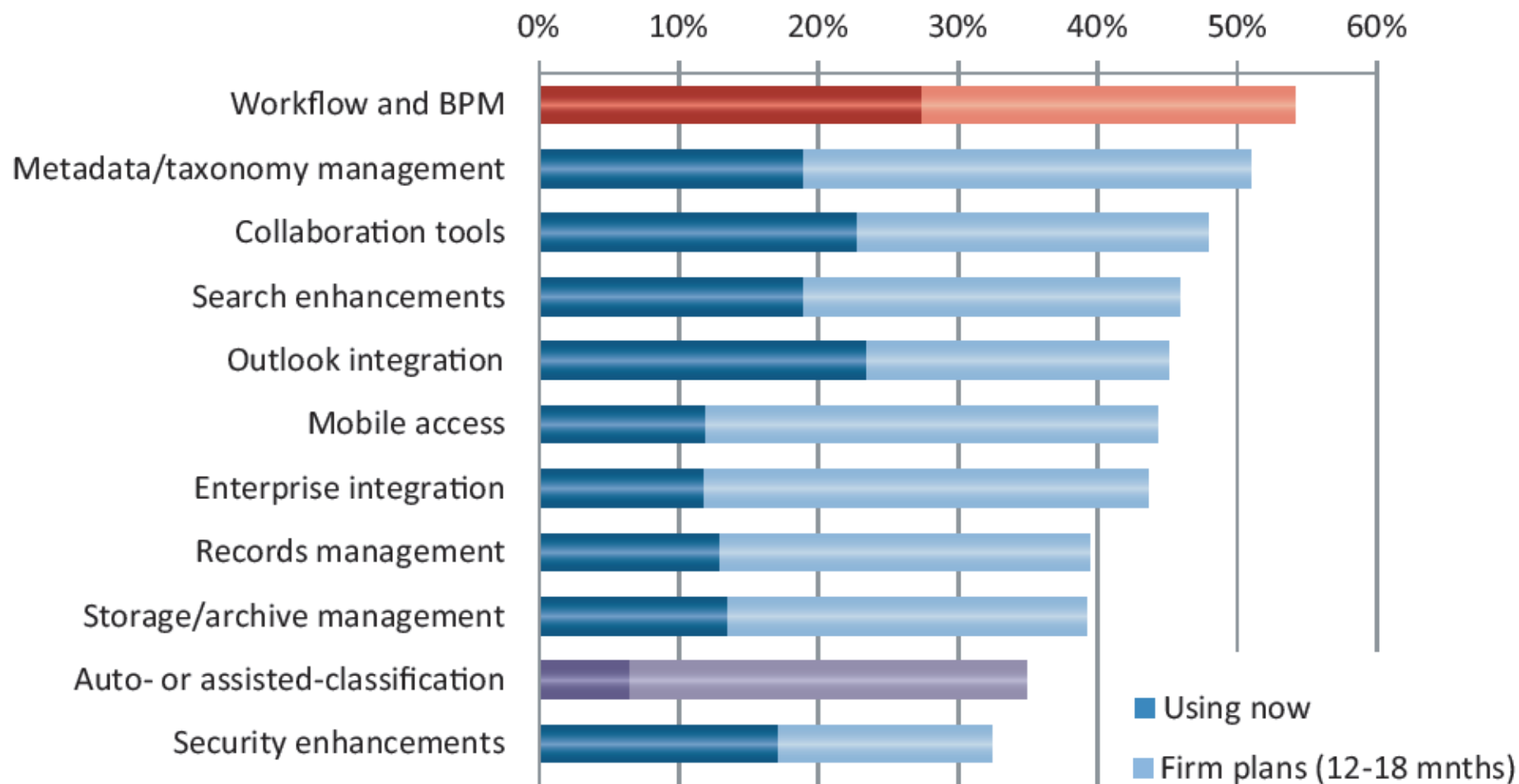
AIIM – Why the Cloud?

Figure 14: If you are moving or planning to move to cloud/365, what is the primary driver? (Max TWO)? (N=144, excl. 120 Don't Know, N/A)



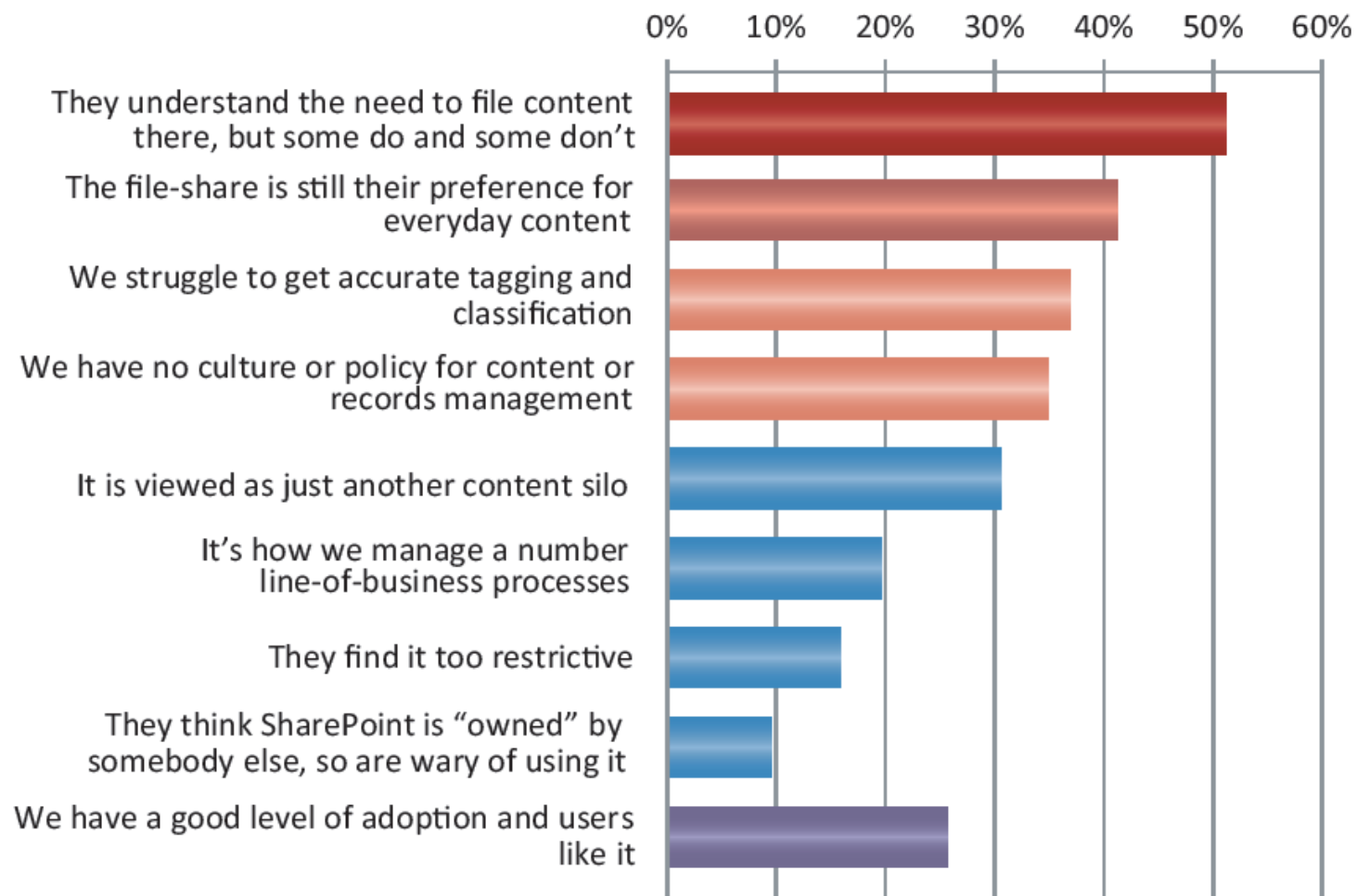
AIIM – Popular 3rd Party Solutions

Figure 17: Which of the following third party enhancement products for SharePoint have you implemented/plan to implement? (N=256)



AIIM – Driving User Engagement

Figure 7: From the ECM/DM point of view, how would you describe the way your users consider SharePoint? (Check all that apply) (N=301 live on SharePoint)



Agenda

- **Reaping cloud benefits: cost-savings, flexibility & a significant remote footprint**
- **Safeguarding on-prem benefits: customization, compliance & manageability**
- **Strategies to solving the identity crisis**
- **Implementing next generation hybrid search across all environments**
- **Driving adoption with a unified view for users, anytime, anyplace, any device**




Bill Baer



Overview

Cloud Deployment Scenarios

KEY SCENARIOS

Traditional Non-Virtualized 	Private Cloud 	Public Cloud 
<p>Compliance – corporate or regulatory</p> <p>Very large application size that can't be virtualized</p> <p>I.e., large mission-critical, and data warehousing workloads</p>	<p>Compliance – corporate or regulatory</p> <p>Applications can be virtualized</p> <p>Improve infrastructure utilization, management, and operations</p> <p>I.e., tier 2 and tier 3 OLTP, BI workloads</p>	<p>Idea to new application quickly</p> <p>Variable demand in bursts, low latency</p> <p>Don't want to own or manage the infrastructure</p> <p>I.e., consumer facing apps, BI in the Cloud</p>
<p>← HYBRID APPLICATION →</p> <p>Cloud application with on-premise data source or on premise application extend to cloud (i.e., bursting)</p> <p>Low latency not required</p> <p>I.e., low cost data migration and backup; Cloud bursting, extended enterprise</p>		

Overview

Cloud Business Cases



* Enhanced by upcoming Azure IAAS features

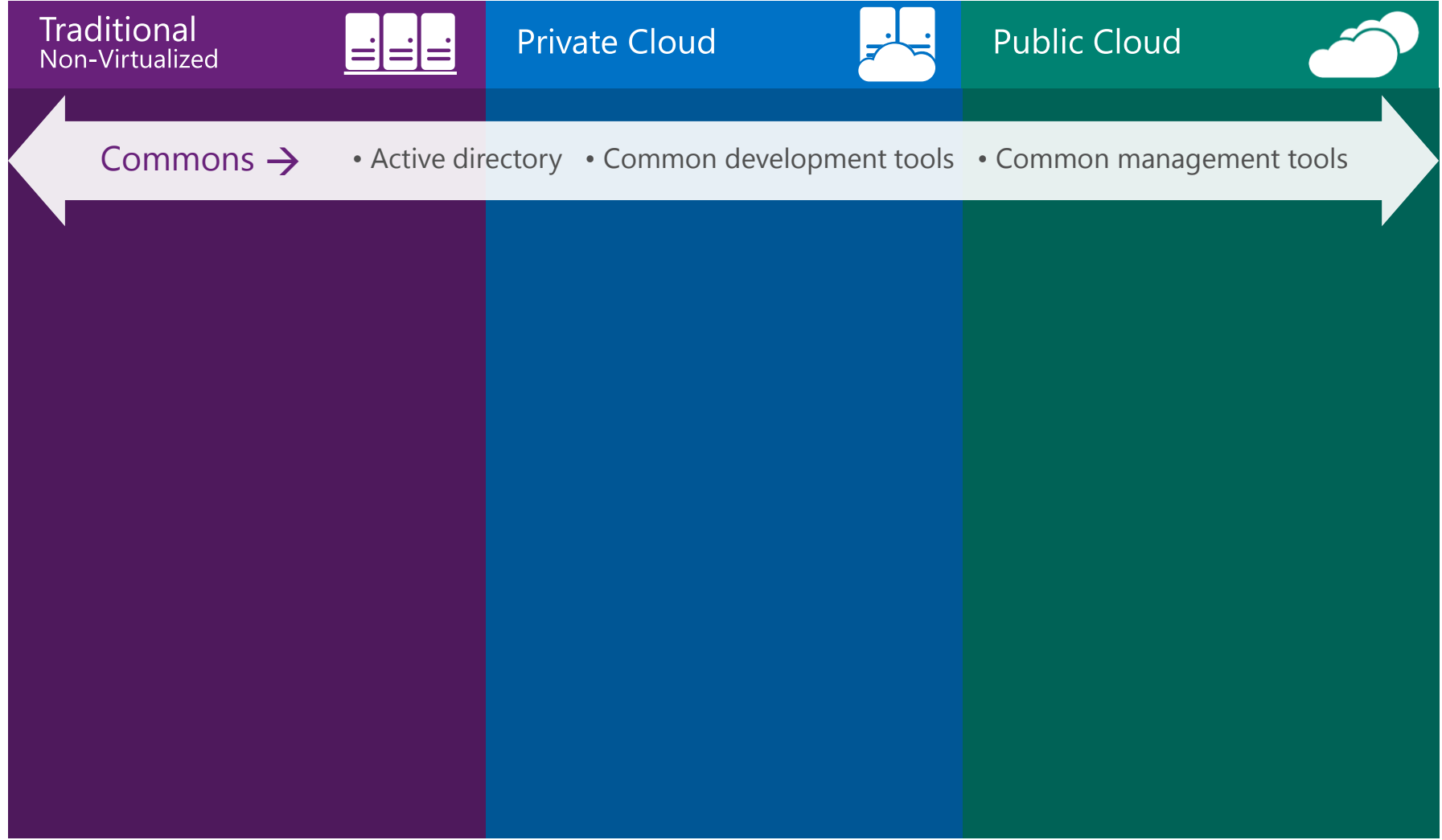
Overview

The Hybrid Cloud

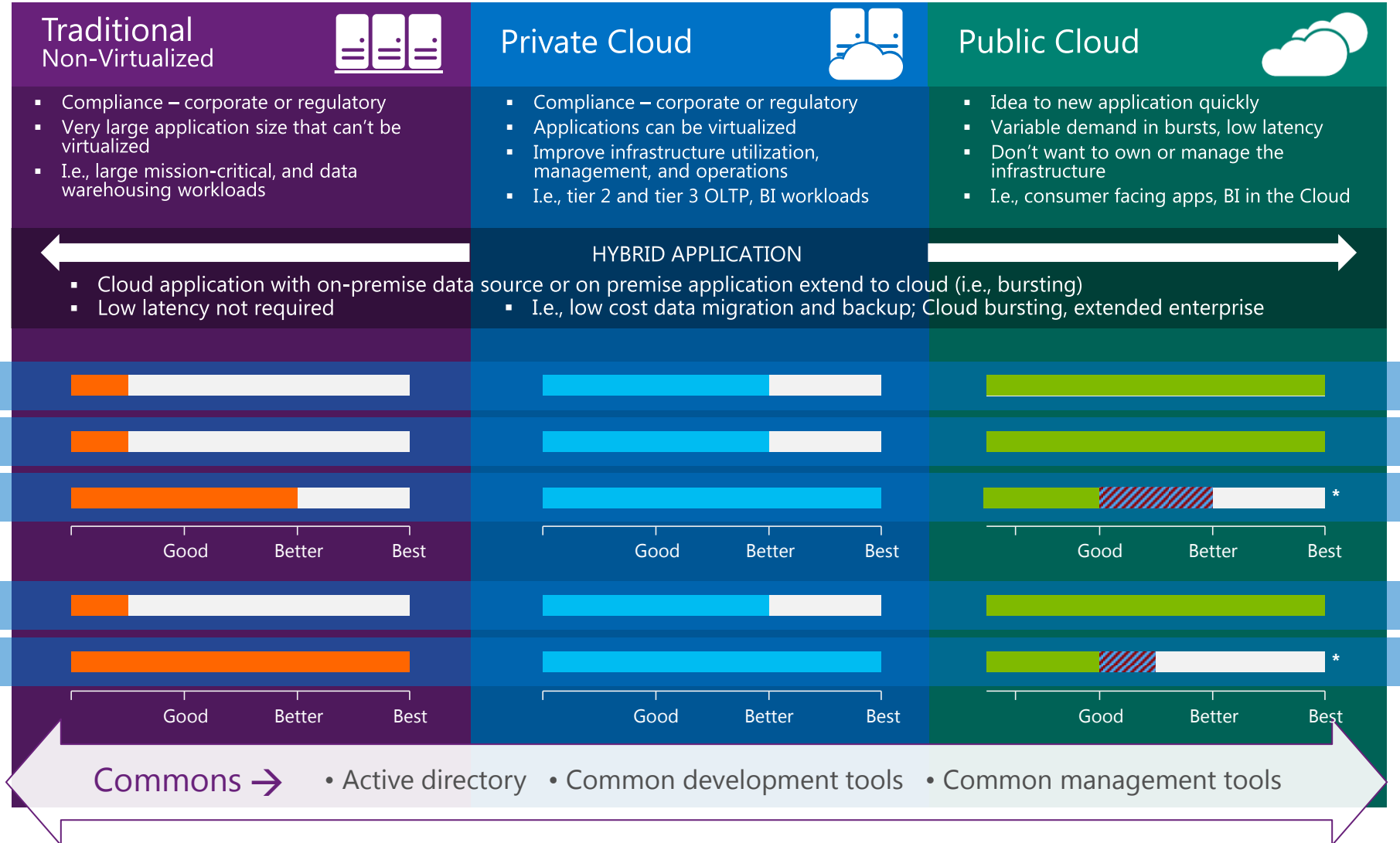
Microsoft

Hybrid IT

MICROSOFT
Hybrid Cloud



Hybrid Cloud



* Enhanced by upcoming Azure IaaS features

Why hybrid?

Flexibility

On-Premises customization

Significant footprint in remote locations

Regulatory reasons

Manageability

26%

of enterprise customers are "on the road" to cloud



Hybrid Scenarios and Benefits

Two scenarios of hybrid model in an Enterprise

Migration to the cloud

Migrate at their own pace to the cloud with little or no disruption to existing service

Pilot Online Service with a subset of users



Maintaining a hybrid model

Continue to maintain hybrid model providing services on-premises or online based on the organization needs

Continue to use existing customizations on-premise

Easily off-board exchange mailboxes from cloud to on-premises



Migrate remote users physically distant from On-Premise deployment to Online for better experience

Host certain data in particular locations Online for Compliance or data sovereignty reasons

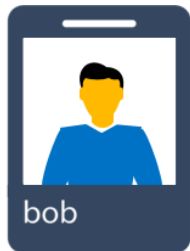
Advantage of moving to cloud infrastructure (TCO) where ever possible

Identity Considerations

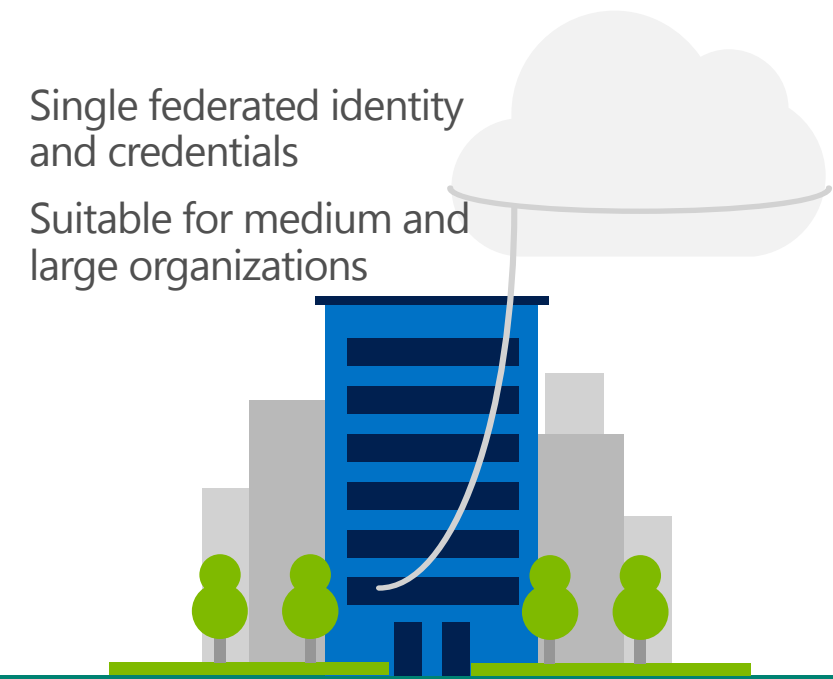
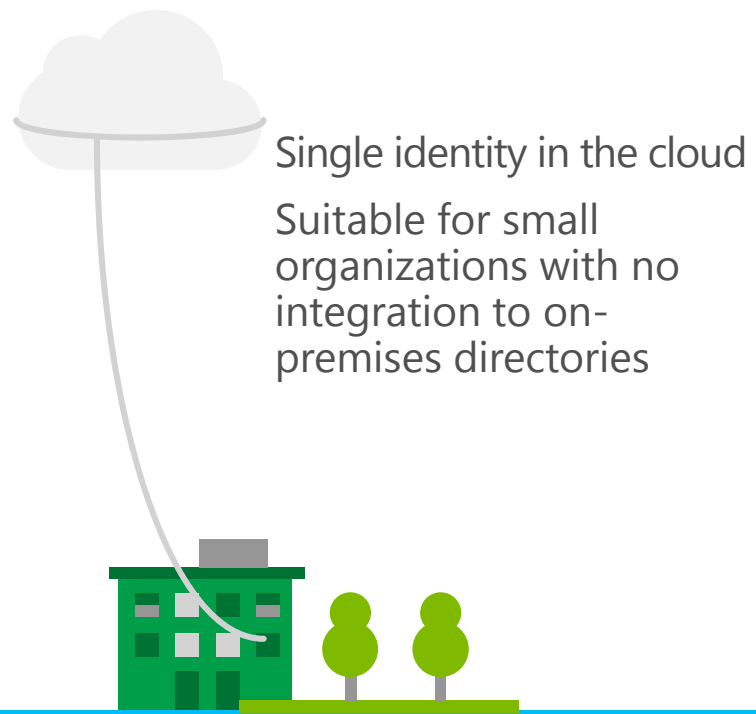
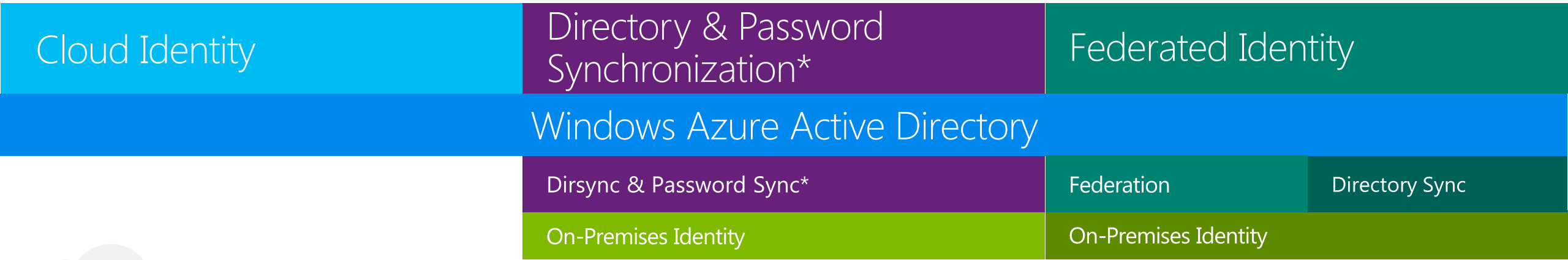
Cloud Identity

Directory Synchronization

Active Directory Federation Services



Identity Crisis



The most important Cloud characteristic is the ability to **migrate workloads** between public and private Cloud

North American CloudTrac Survey, IDC, 2012



Workloads

Search

SharePoint on-premises

Search index can contain relevant content identified and gathered from "crawling" through local sites, file shares, and more

SharePoint Online

Search index can contain relevant content identified and gathered from "crawling" through online sites

Hybrid search

Users can view search results from both indexes in a single search

Authentication topology determines configuration



Workloads

Business Connectivity Services

Enables users to publish on-premises data to a list or application external to SharePoint Online

Enables federated users to gain access to on-premises data from SharePoint Online

Requires a two-way authentication topology using an external URL published by reverse proxy

Connects only through OData source



Workloads

OneDrive for Business



1

Redirect OneDrive to Cloud

This is the first step in setting up users to use OneDrive in the cloud instead of OneDrive on premises

After this step, users' OneDrive document library will be in the Cloud

Rest of MySite stays on premises

2

Redirect Sites to Cloud

If team sites are staying on premises, then you don't want to redirect Sites to Office 365 yet

Do not redirect Sites at this time

3

Choose users to use OneDrive in Office 365

You can choose to redirect all users' OneDrive to use the Cloud (Everyone)

Or if this is a "evaluation" period, you can choose to have select users evaluate OneDrive in Office 365 using an audience

Workloads

Social

Using on-premises and online social capabilities results in disconnected islands of information

Users cannot act on (such as follow and tag) documents that are in SharePoint Online from SharePoint on-premises

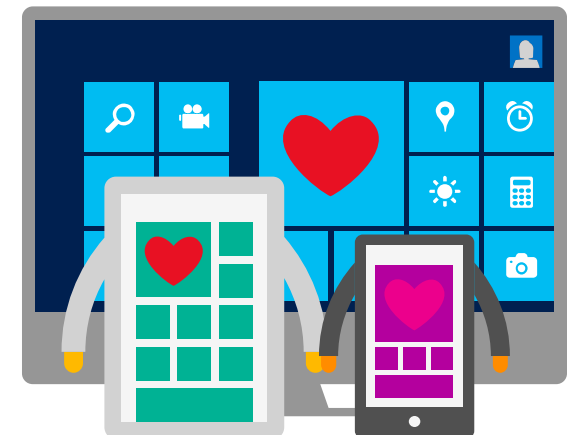
Users cannot act on documents that are in SharePoint on-premises from SharePoint Online



Integrating Yammer into SharePoint resolves this disconnect

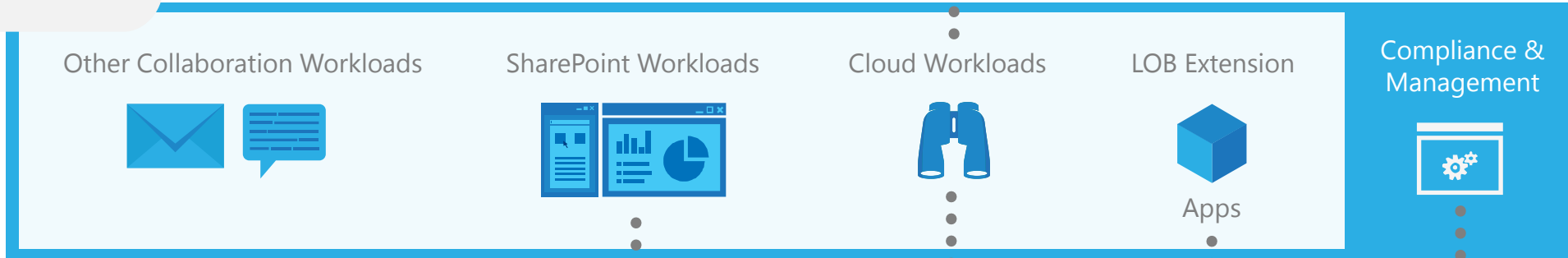
Yammer connects information in a hybrid SharePoint environment

Yammer replaces the newsfeed and is embedded on SharePoint pages

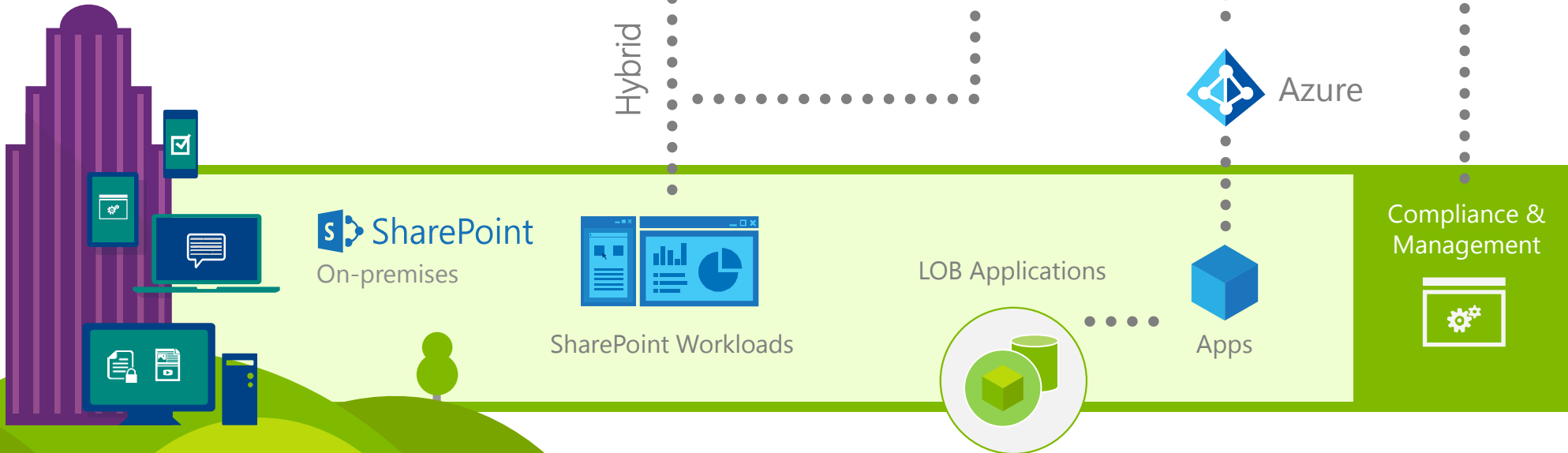


Evolution of Hybrid

Office 365

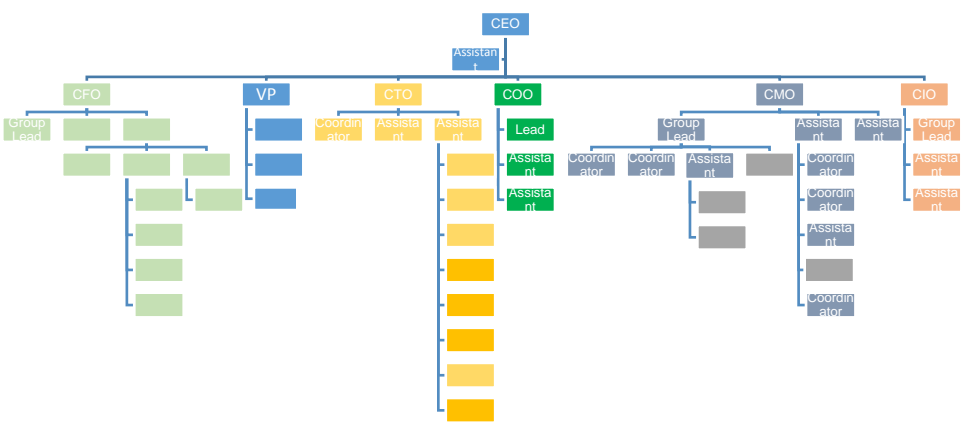
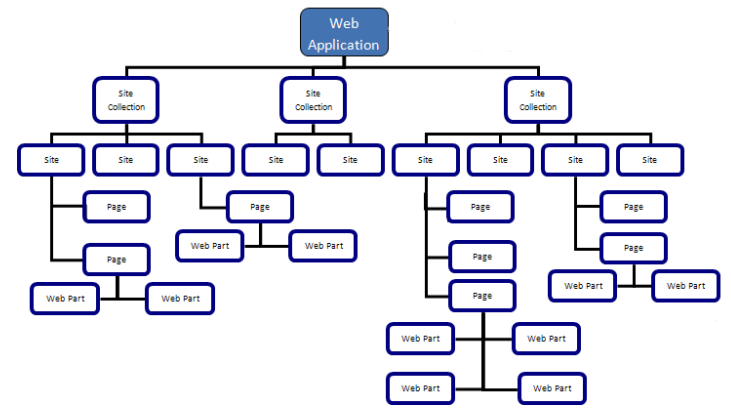
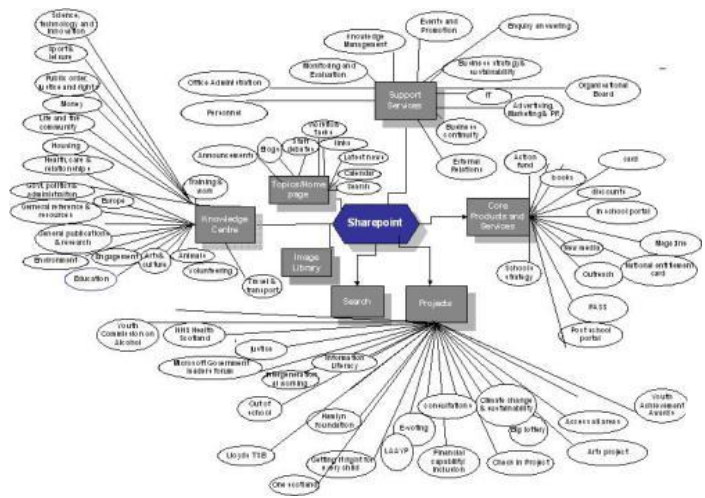


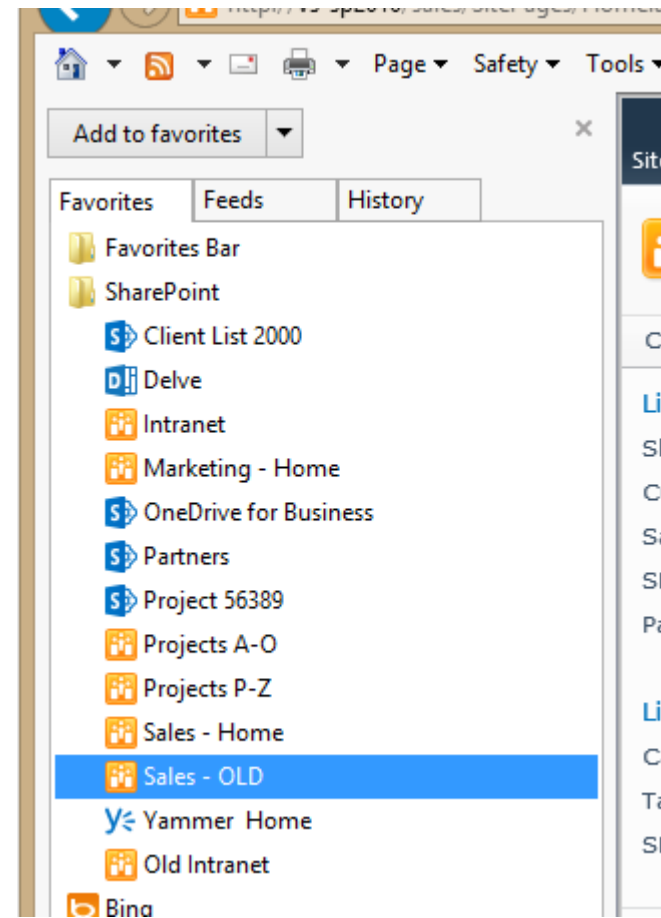
Hybrid



Ben Henderson







Tips for End User Success

Minimize
End User
Impact

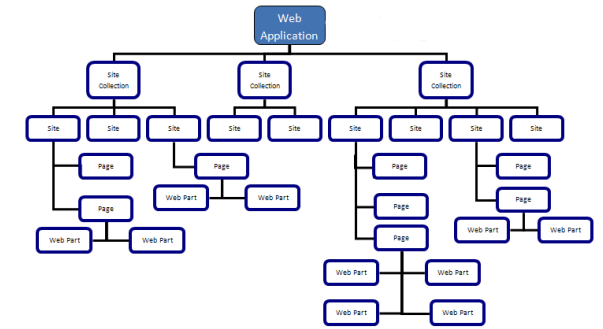
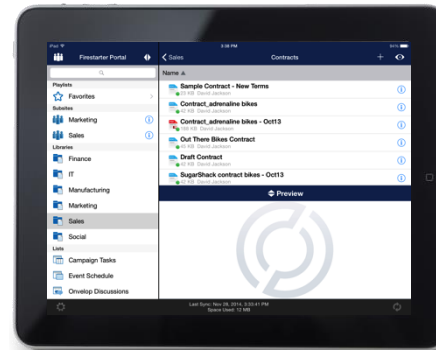
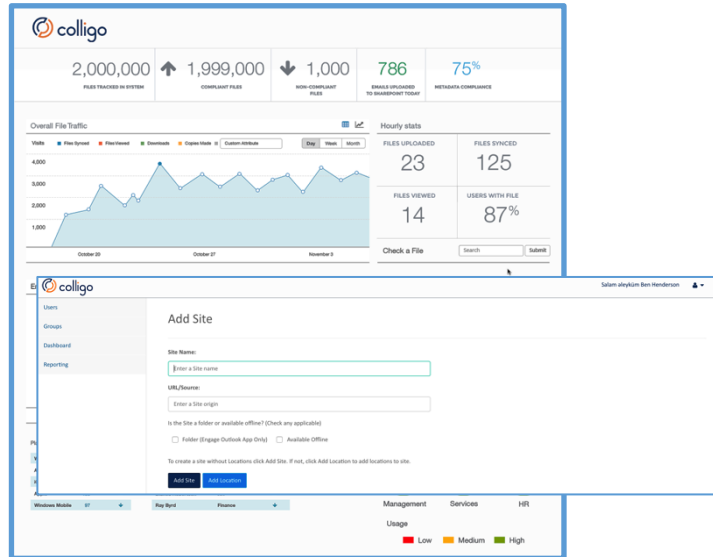
Get the Right
Content on the
Right Devices

Offer a
Single Pane of
Glass

Customer Success Story:

- Multinational pharma
- Field sales productivity
- SharePoint On-Prem, One Drive for Business, Colligo Engage

Colligo Engage



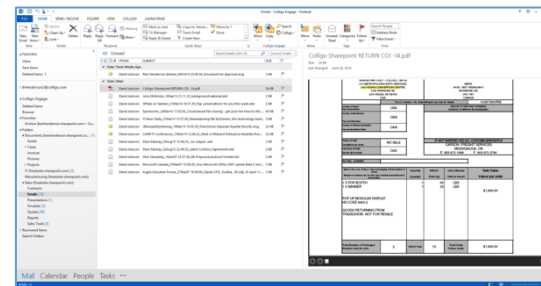
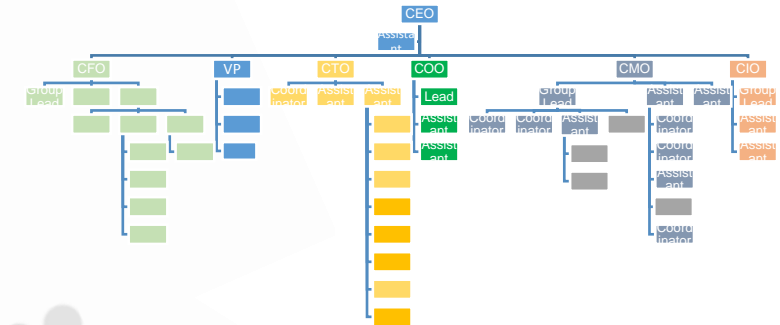
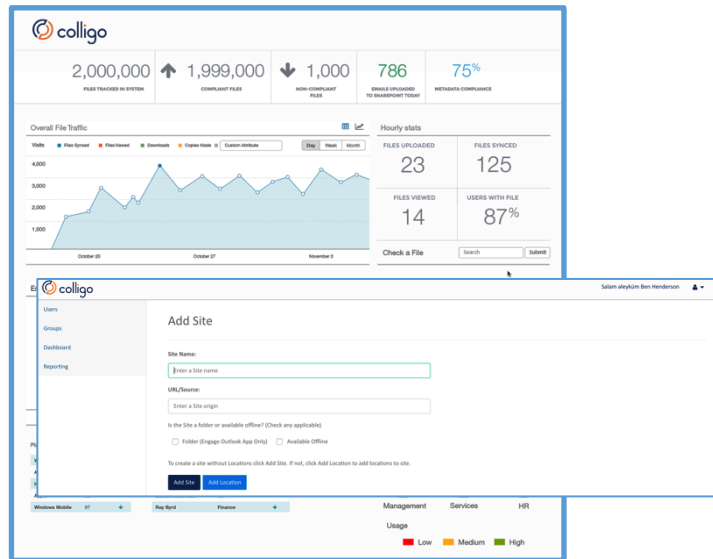
Customer Success Story:

- Global utilities
- Field engineers
- Office 365, SharePoint on-prem, Colligo Engage

Customer Success Story:

- Consultancy Organization
- SharePoint 2010 and SharePoint Sites (O365)
- Records Management and Email Disposition

Colligo Engage



SharePoint Online

Sites

Tips for End User Success

Minimize
End User
Impact

Get the Right
Content on the
Right Devices

Offer a
Single Pane of
Glass

Learn More !

www.colligo.com

Get your evaluator's
checklists ...



Questions?



FREE Resources



AIIM Market Intelligence
Delivering the priorities and opinions of AIIM's 80,000 community

Industry Watch

Connecting and Optimizing SharePoint
– important strategy choices

Underwritten in part by:



AIIM REPORT



FREE TRIAL

www.colligo.com